



WESTCLIFF
UNIVERSITY
COLLEGE OF NURSING

COLLEGE OF NURSING

NOW IN CORONA, CA!

BRN Approved. Westcliff University
is regionally accredited by WSCUC.

westcliff.edu/nursing

WELCOME TO WESTCLIFF UNIVERSITY'S COLLEGE OF NURSING!

Westcliff University: A Bold Approach to Nursing Education



Westcliff University is a forward-thinking, globally recognized institution committed to empowering students with career-driven education since 1993. **We believe in breaking barriers to opportunity, fostering innovation, diversity, and hands-on learning to prepare students for real-world success.** Our programs in nursing, business, technology, education, and law are designed to meet the demands of today's constantly evolving workforce—helping you turn your passion into a fulfilling career.

At Westcliff's College of Nursing, we don't just teach nursing—we shape the next generation of compassionate, highly skilled healthcare leaders. Our immersive, **hands-on training** prepares you for the fast-paced world of patient care, ensuring you're ready to make a real impact from day one.

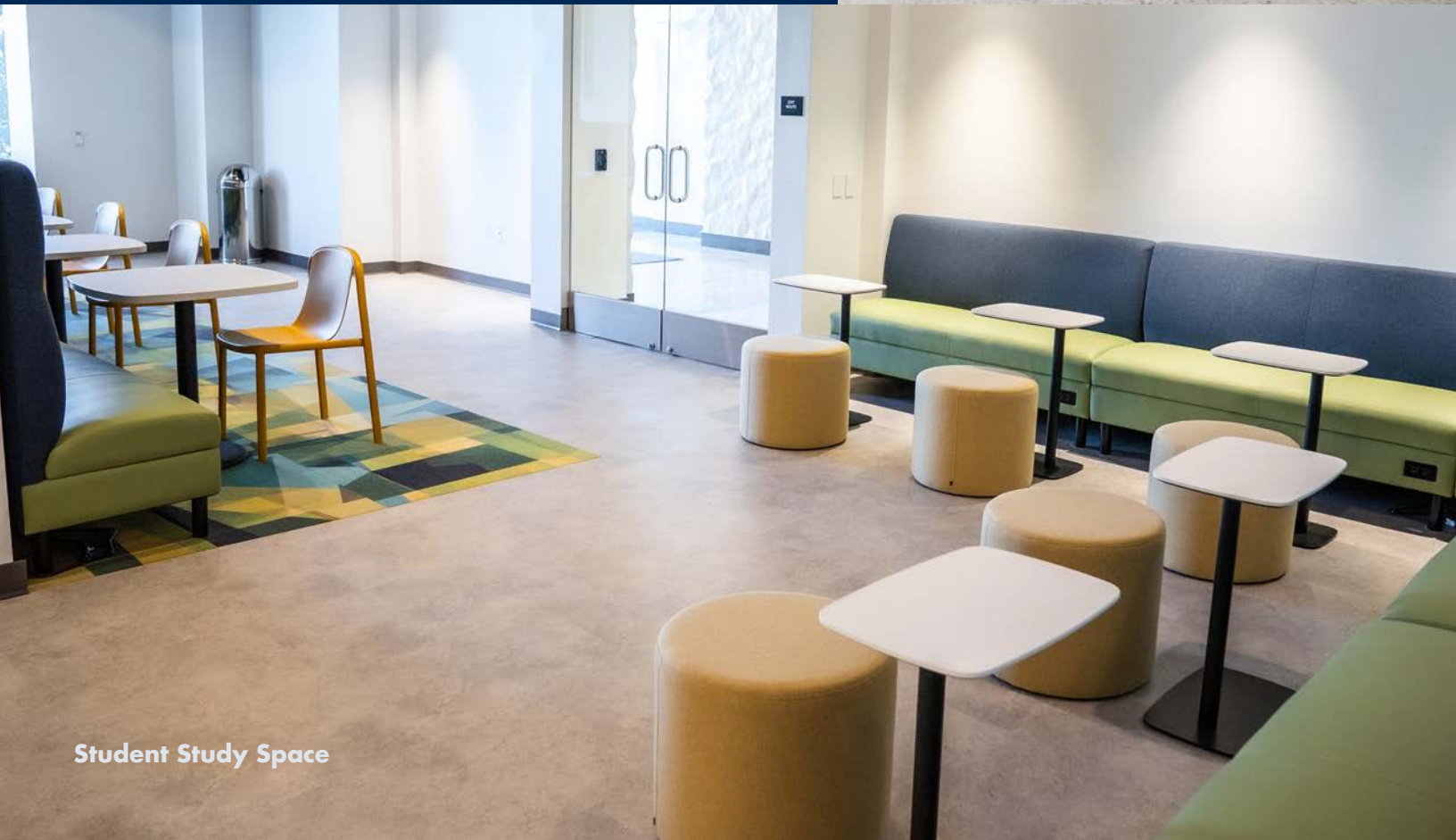
STATE-OF-THE-ART NURSING CAMPUS

Located just off I-15 in Corona, Westcliff's large, bright, newly designed nursing campus is built for interactive, career-focused learning with cutting-edge simulation labs and modern study spaces. You'll train in a realistic clinical environment, preparing for the challenges of patient care before ever setting foot in a hospital.

Plus, with ample free parking and walking distance to shopping, dining, and entertainment at Dos Lagos, you'll be studying in a convenient, vibrant location that fits your lifestyle.

At Westcliff University, you're not just earning a degree—you're stepping into a supportive, career-focused community that gives you the skills, experience, and confidence to thrive in today's healthcare world.

Are you ready to take the first step?



Student Study Space



HANDS-ON LEARNING

with Brand New Labs

At Westcliff, you'll gradually gain clinical experience before your first hospital shift. Our industry-leading Nursing Campus features:

FOUR SIMULATION PODS

High-fidelity, life-like manikins that mimic real patient responses

FULLY EQUIPPED LABS

Nursing Skills Lab and Science Lab for mastering essential techniques

EIGHT MODERN CLASSROOMS

Designed for interactive instruction and collaboration

DEDICATED STUDY SPACES

Group work and focused learning

By practicing in a controlled, high-tech environment, you'll develop critical decision-making skills and build confidence before entering live patient settings.

INNOVATIVE DIGITAL LEARNING with ATI Engage

Westcliff integrates ATI's Engage Series, a next-generation learning platform that replaces traditional textbooks with interactive, multimedia-rich coursework. Instead of reading static pages, **you'll engage with case studies, simulations, and real-world nursing scenarios**, helping you retain information more effectively.

This tech-forward approach ensures you're not just memorizing facts—you're **learning how to think like a nurse from day one.**

WHY STUDY NURSING at Westcliff?



Legacy institution founded in 1993



Beautiful, brand-new campus strategically located right off the I-15, next to the Shops at Dos Lagos, and near several large healthcare facilities



Student Success Prescription Planning with NCLEX exam prep and career readiness starting on day 1



You'll be part of a university with vast technology, networking, and career resources + athletic games and tons of fun events!



Includes **membership in the National Student Nurses' Association (NSNA) & California Nursing Students' Associations (CNSA)**, offering leadership development and professional mentorship for a seamless transition into your career



BSN & ENTRY-LEVEL MSN PROGRAMS

Designed for Your Success



Whether you're earning your Bachelor of Science in Nursing (BSN) or Entry-Level Master of Science in Nursing (ELM), Westcliff's programs are structured to give you:



Comprehensive clinical
experience in a variety of
healthcare settings



A strong foundation in
leadership & interdisciplinary
collaboration



A global perspective on
healthcare challenges &
innovations

Our curriculum prepares you not just for your first nursing job, but for long-term success in clinical practice, leadership, and beyond.

BSN (BACHELOR OF SCIENCE IN NURSING)



For students who are starting their nursing education and have some or no transfer credits. **Upon completion of Westcliff's BSN program, you will be prepared to take the NCLEX licensure exam and start your career as a registered nurse (RN).** You will begin with general education and foundational courses in natural and social sciences, then move on to engaging nursing classes with hands-on labs and real-world clinical preceptorships, giving you the skills and confidence to succeed in the field.

120 credits

36 months, full-time*

**Program can be completed in less time with approved general education transfer of credits.*

Classes in Corona, CA

First Cohort September 2025

Enter with HS diploma or GED + 2.75 GPA + composite score of 58 on Test of Essential Academic Skills (TEAS)



ELM (ENTRY-LEVEL MASTER OF SCIENCE IN NURSING)



Are you stuck in a career that no longer inspires you? **Do you hold a Bachelor's or Master's degree in another field?** The ELM program is for you.

WU's ELM program is designed to prepare you for the NCLEX exam and earn your RN license, which combined with a graduate degree and your previous experience might open doors to faster nursing career tracks.

65 credits

20 months, full-time

Classes in Corona, CA

First Cohort September 2025

Enter with Bachelor's or higher degree from an accredited institution + 2.75 GPA

Students completing an Entry-Level Master of Science in Nursing (ELM) graduate with a master's degree, while still being considered entry-level nurses.

As newly licensed RNs, their advanced degree can potentially accelerate career growth and open doors to leadership roles faster than a traditional BSN-prepared nurse, based on their previous education and professional background.

CAREER OUTCOMES FOR REGISTERED NURSES (RN)



Graduating with a Bachelor of Science in Nursing (BSN) or Entry-Level Master of Science in Nursing (ELM) and obtaining a Registered Nurse (RN) license in California opens up a diverse array of career opportunities in various healthcare settings.

Entry-Level

Registered Nurse: Direct Patient Care Role

Hospital Staff Nurse (Medical-Surgical, ICU, ER, Labor & Delivery, Pediatrics, etc.)

Clinic or Ambulatory Care Nurse

Home Health Nurse

Long-Term Care or Rehabilitation Nurse

After Experience

Community & Public Health Nursing

Public Health Nurse (working in health departments, community programs)

School Nurse (some districts prefer advanced degrees)

Occupational Health Nurse (corporate wellness, employee health)

Nursing Leadership & Administration

Charge Nurse or Unit Supervisor (typically after 1-2 years)

Nurse Manager (leading a department, usually 3-5 years post-grad)

Director of Nursing (DON) (longer-term leadership trajectory)

Nursing Informatics & Healthcare Technology

Informatics Nurse (integrating tech and data into patient care)

Electronic Health Records (EHR) Specialist

Teaching & Clinical Education

Nurse Educator (Hospital Setting) – Training new nurses

Clinical Instructor – Teaching in nursing schools

With Certifications

Specialized Nursing Tracks

Case Manager (coordinating patient care and discharge planning)

Nurse Professional Development (NPD) Specialist

Legal Nurse Consultant (supporting medical-legal cases)

Nurse Navigator (guiding patients through complex healthcare processes)



TAKE THE NEXT STEP

Reach out to us to learn more about Westcliff University's **Bachelor of Science in Nursing** and **Entry-Level Master of Science in Nursing** programs and start your journey toward becoming a registered nurse today.

Get in Touch

Fill out the [Request Information](#) form to connect with an admissions advisor.

READY FOR THE NEXT STEPS? START YOUR APPLICATION PROCESS!

APPLY NOW!

[CONNECT.WESTCLIFF.EDU/PORTAL/WUAPPLY](https://connect.westcliff.edu/portal/wuapply)

Tuition & Fees

For more information, visit [Westcliff's Tuition & Fees page](#).

[College of Nursing](#)

Accreditation Status

The Bachelor of Science in Nursing (BSN) program and the Entry-Level Master of Science in Nursing (ELM) at Westcliff University are approved by the Western Association of Schools and Colleges (WASC) Senior College & University Commission (WSCUC) as well as by the California Board of Registered Nursing (BRN).



CONTACT US TODAY!



nursinginfo@westcliff.edu



[951-268-5998](tel:951-268-5998)

CHECK OUT OUR SOCIAL MEDIA



[westcliffuniversity](https://www.facebook.com/westcliffuniversity)



[westcliff-university](https://www.linkedin.com/company/westcliff-university)



[@westcliffuniversity](https://www.instagram.com/westcliffuniversity)



[@WestcliffU](https://twitter.com/WestcliffU)



[@westcliffuniversity](https://www.tiktok.com/@westcliffuniversity)



[@westcliffuniversity](https://www.youtube.com/@westcliffuniversity)



WESTCLIFF
UNIVERSITY
Educate. Inspire. Empower.

4140 TEMESCAL CANYON RD, CORONA, CA 92883

[westcliff.edu/nursing](https://www.westcliff.edu/nursing)